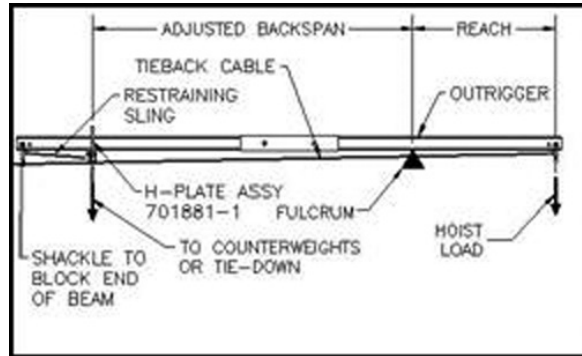


# H-Plate Assembly (701881-1)

**Engineered connection to adjust outrigger beam rigging point and/or backspan to fit jobsite conditions.**

**Key Features:**

- Allows user to reduce backspan where space is limited by balconies, walkways or other obstructions
- Allows user to adjust the backspan to tie the beam directly down to a structural anchor
- Allows user to reduce the beam outreach to reduce counterweights used
- Heavy duty steel construction
- Used with 6x4, 8-0217-5/6/7 5x5 and 4720-01/-02/-34 outrigger beam assemblies
- No tools installation
- Tieback required, block end of beam with 5/8 in. (16 mm) shackle at usual rigging point
- Shackles included
- Thorough labeling simplifies worry-free installation
- Made by Spider in the USA



Specifications:	701881-1
<b>Load Rating:</b>	1,500 lb (680.4 kg)
<b>Weight:</b>	4 lb (1.8 kg)
<b>Dimensions:</b>	7 x 11 x 1/2 in (178 x 279 x 13 mm)
<b>Outreach:</b>	Per Outrigger Beam
<b>Backspan:</b>	Min. is 1.5 times outreach

